



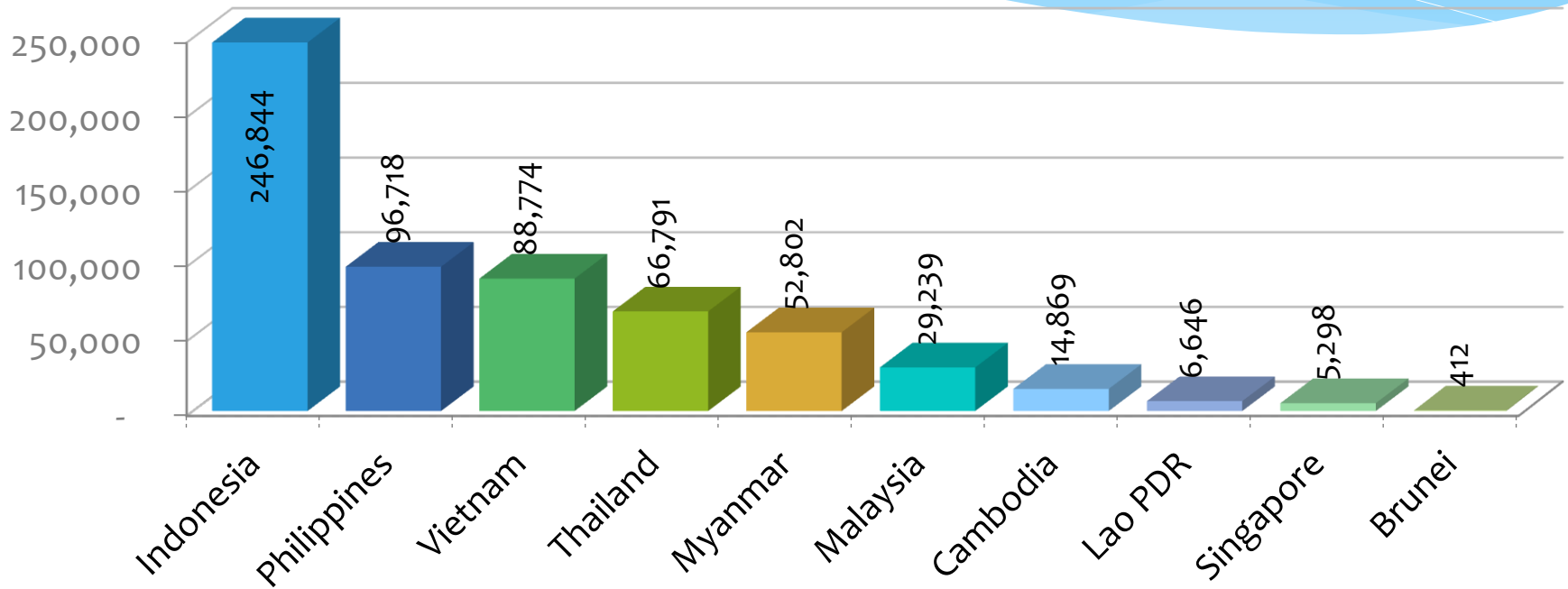
Commission on Higher Education

BULLETIN ON ASEAN MEMBERS

DEMOGRAPHICS

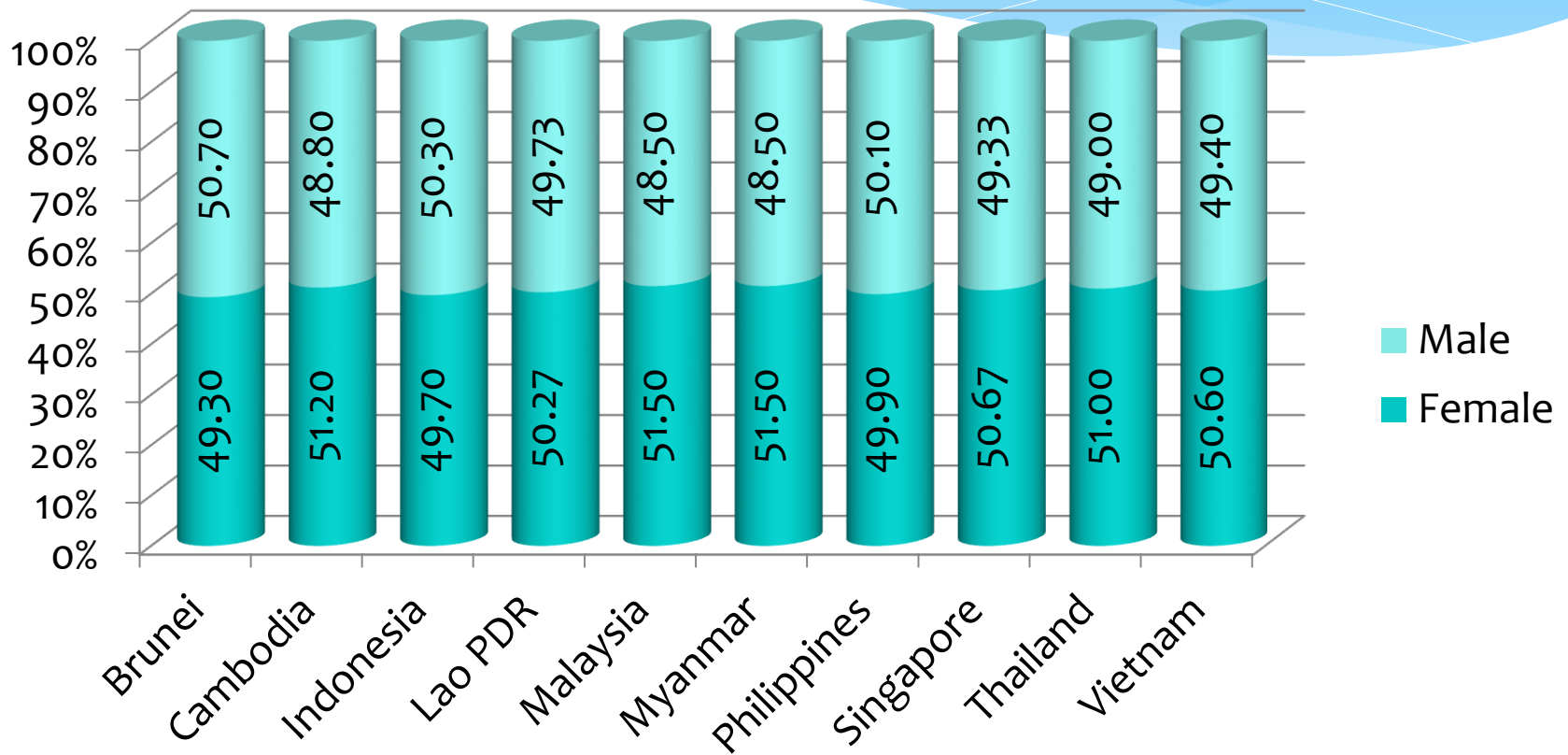


Average population (in thousands), 2011-2013



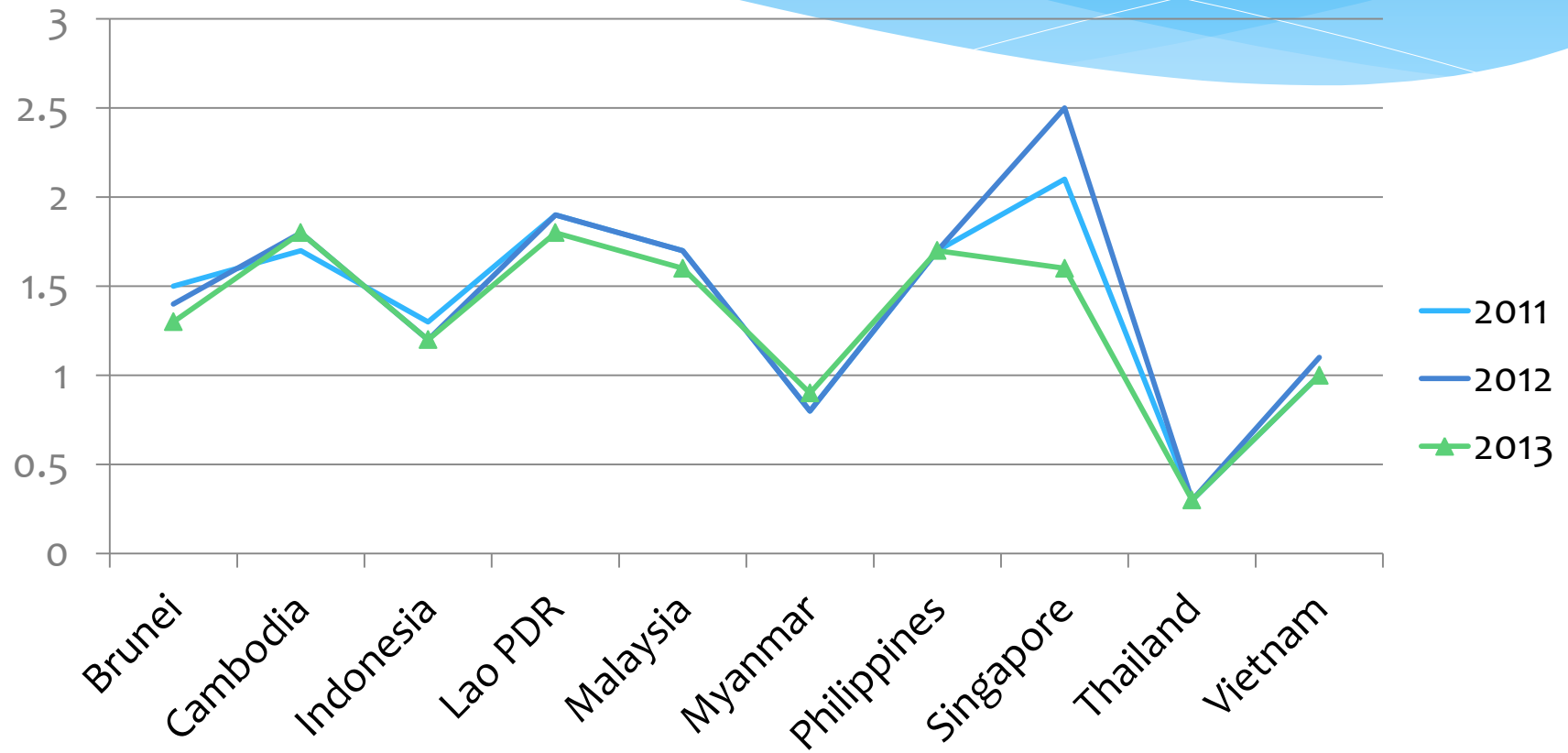


Average distribution of population by gender (%), 2011-2013



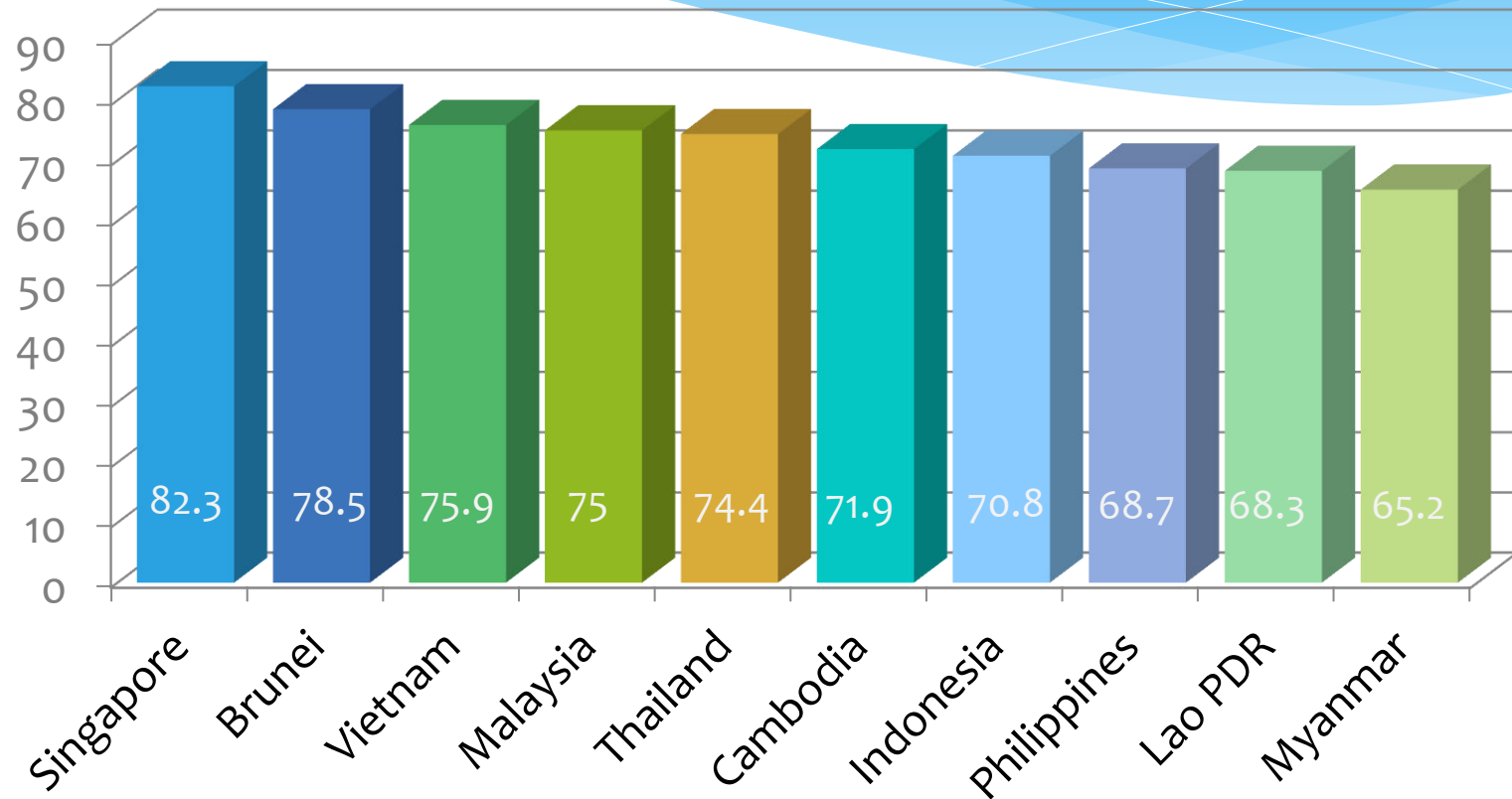


Annual population growth (%), 2011-2013



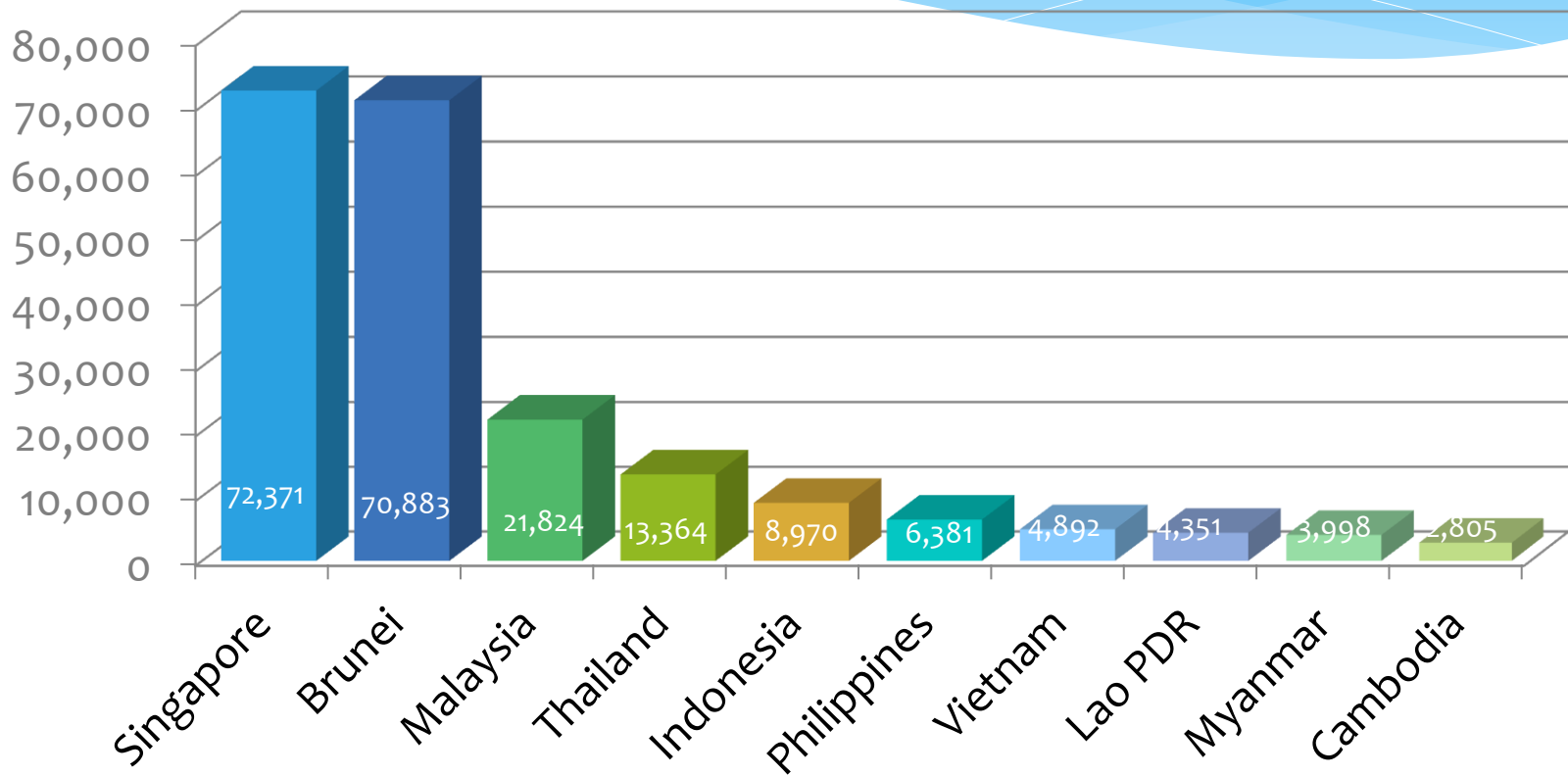


Life expectancy at birth, 2014



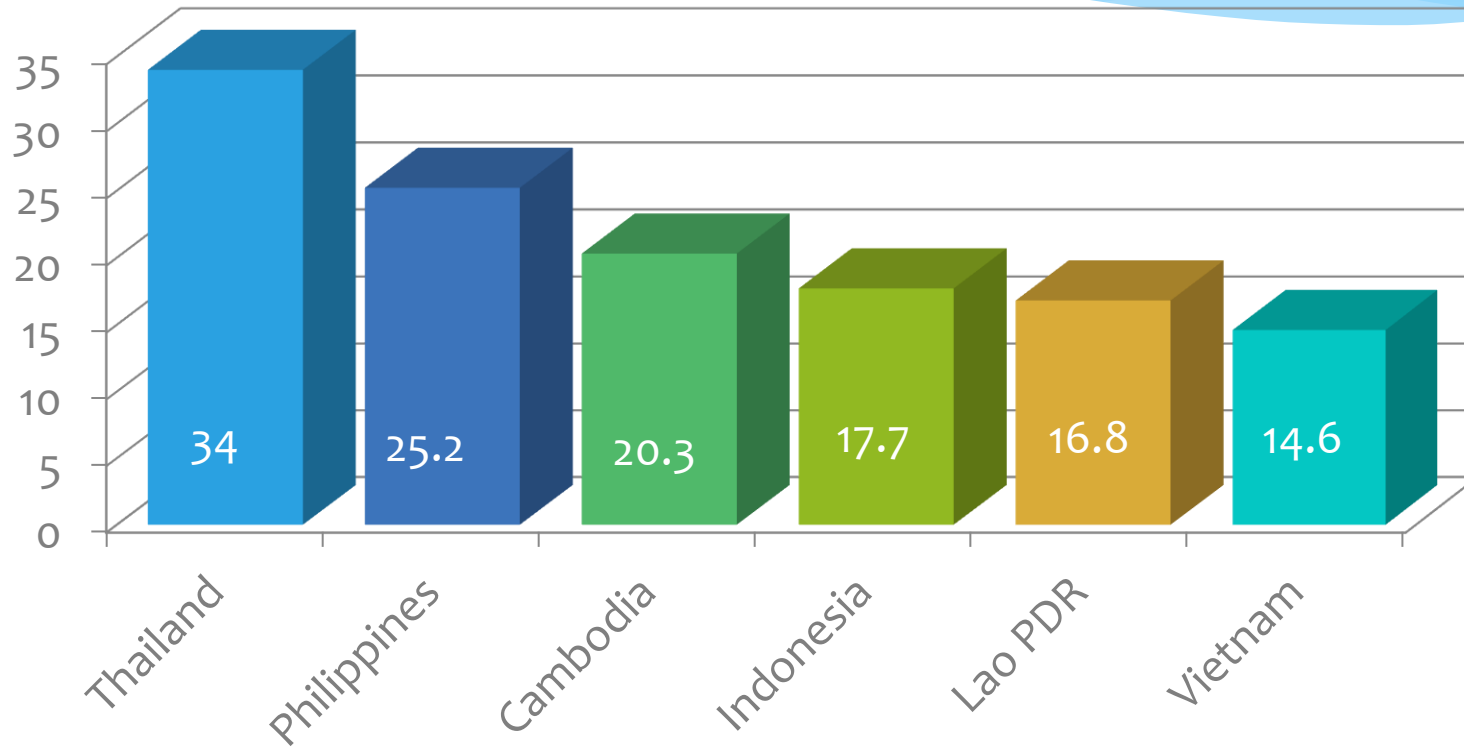


Gross National Income per Capita, 2014



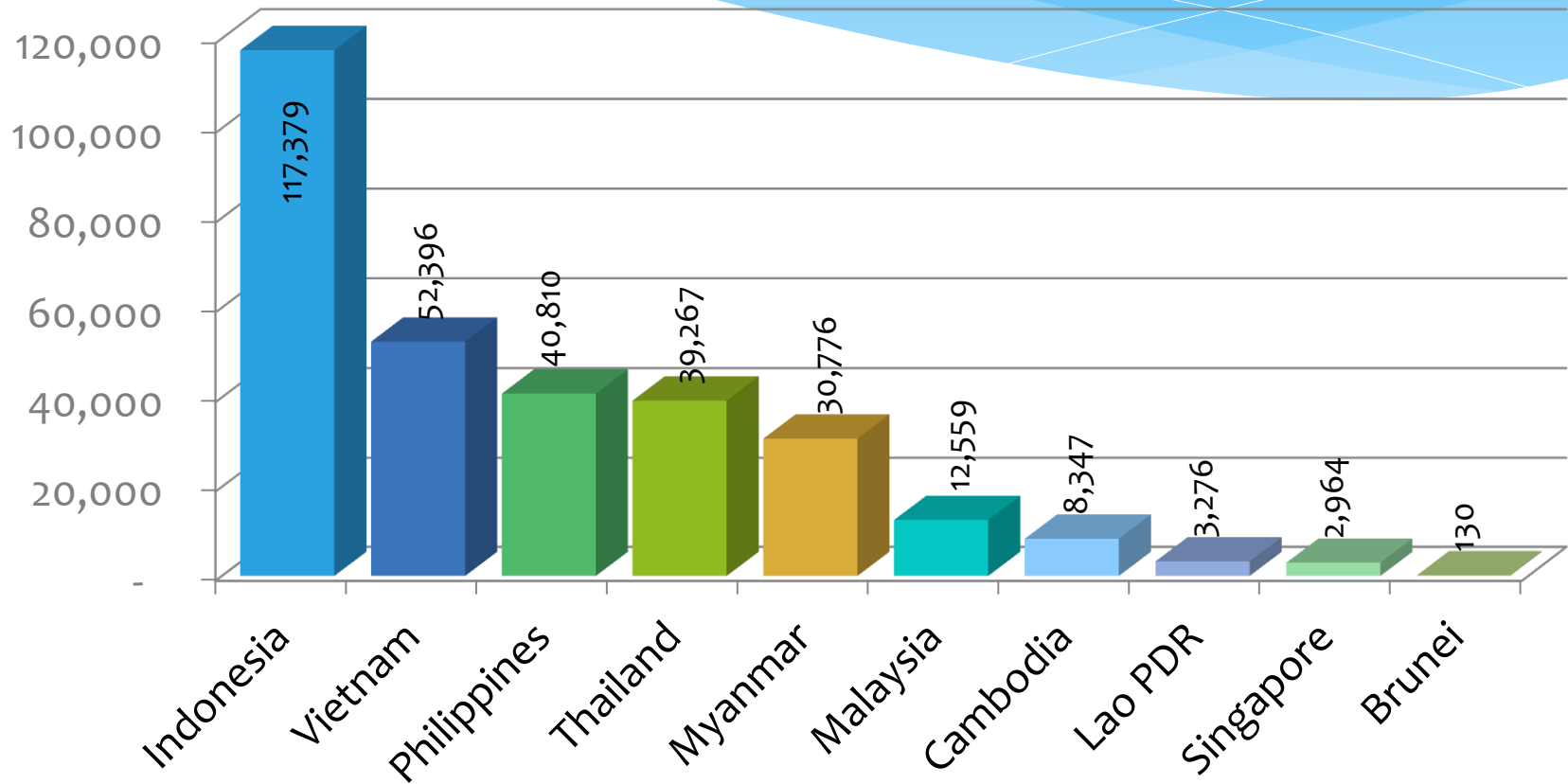


Inequality in income (%), 2014





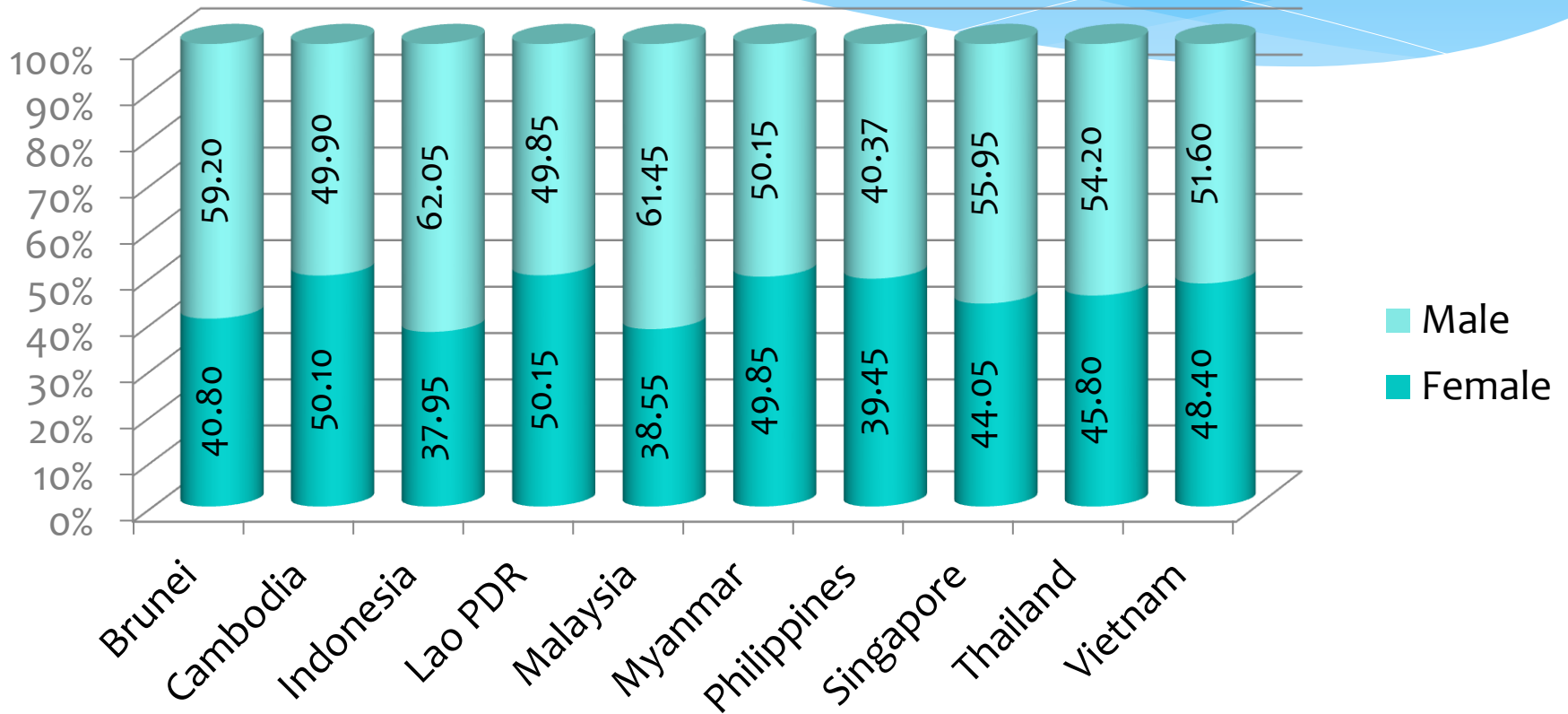
Average Labor Force (in thousands), 2011-2013



Note: Labor force refers to the population 15 years old and over, whether employed or unemployed, who contribute to the production of goods and services in the country.
Source: Education Statistics - All Indicators - World DataBank (<http://databank.worldbank.org/data/views/variableselection/selectvariables.aspx?source=education-statistics>)



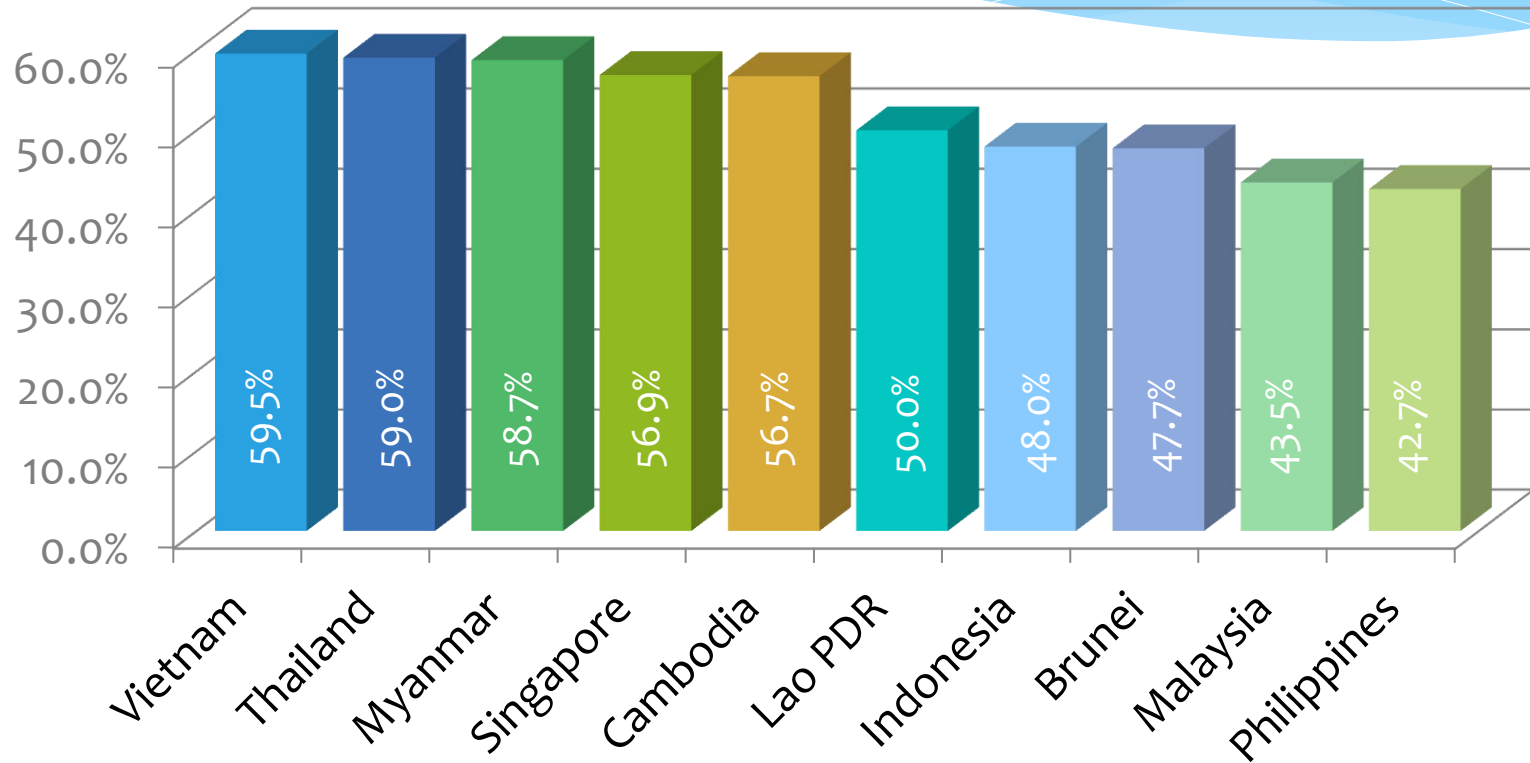
Average distribution of labor force by gender (%), 2011-2013



Male
Female



Labor force as % of total population, 2012





Average Distribution of Labor Force by Highest Educational Attainment (%), 2011-2013

